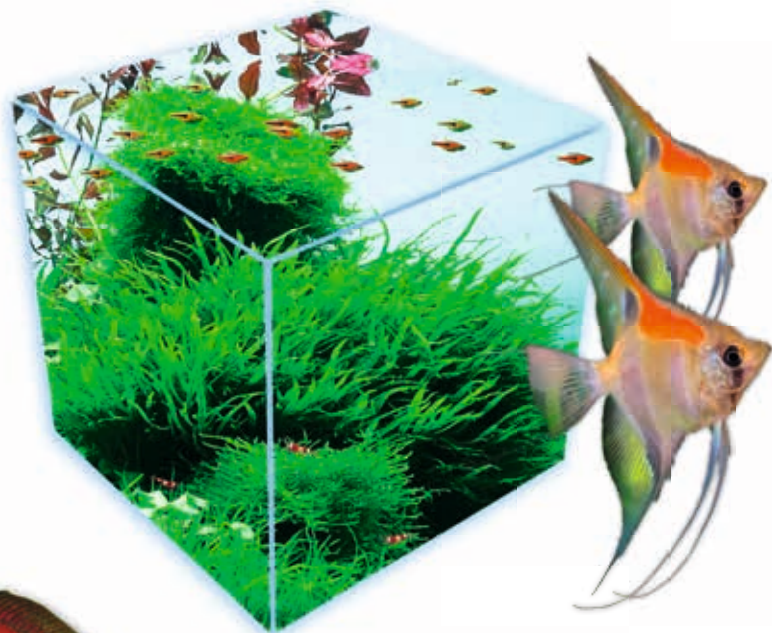




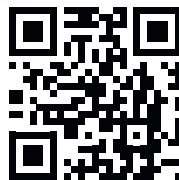
EASY-LIFE®

Professional Aquarium and Pond Products

PRODUCT INFOBOOK



Easy-Life
Dosing App



Product group	Page nr.	suitable for	
		Freshwater	Marine
Water treatment			
Easy-Life Fluid Filter Medium	4	•	•
EasyStart	8	•	•
Catappa-X	9	•	
AquaMaker	10	•	•
Catappa-Marine	12		•
Plant food			
ProFito	13	•	
Ferro	15	•	
Potassium	15	•	
EasyCarbo	16	•	
EasyCarbo Bio	17	•	
Nitro	18	•	
Fosfo	18	•	
25 Root Sticks	19	•	
Algae/Cyano			
AlgExit	28	•	
Blue Exit	28	•	
Excital	29		•
Bio-Exit Green	30	•	
Bio-Exit Blue	30	•	

Product group		suitable for	
		Freshwater	Marine
Fishcare & health			
EasyNeo Safe Transport		•	•
Voogle	Page nr.	•	•
Marine additives	31		
MaxiCoral A & B	32		•
Calcium			•
Iodine			•
Magnesium	36		•
Strontium	37		•
pH-Buffer (KH+)	37		•
	38		
Water Tests	38		
6in1 Test Strips	39	•	
Potassium (K)		•	
Phosphate Ultra Sensitive (PO4)		•	•

Extra information



⁴² The Golden Triangle in your aquarium

Optimal use of nutrients.

The theory of plant growth in an aquarium with examples.

Page nr.

21 - 27



Voogle: the new way

Prevent fish diseases without any antibiotics.

34 - 35



Easy-Life Fluid Filter Medium

The ultimate water treatment that does not contain chemicals

Easy-Life Fluid Filter Medium is the most versatile water treatment product on the market. It can be used to make water crystal clear. It is used for water preparation, as well as a maintenance product, a stimulator (e.g. for plant growth) and a prophylaxis (to prevent infections). It effectively solves a wide range of freshwater and saltwater problems. Furthermore, it is made from 100% natural products and is extremely safe to use.



Easy-Life Fluid Filter Medium (Easy-Life FFM) is a unique product which greatly simplifies the keeping of fish, plants and invertebrates in freshwater and marine aquaria. Easy-Life FFM does not only make the water crystal clear, but also produces healthy, active and colourful fish. Easy-Life FFM contributes to a superior water quality (so that the water has to be changed less often) and a reduced growth of algae, and it greatly reduces the stress of the living creatures. Easy-Life FFM is a natural product and does not contain chemical additives, but still has more than 30 positive effects!

Easy-Life FFM has a wide range of positive effects:

Water

- Makes the water crystal clear
- Greatly improves and stabilizes the water quality
- Removes heavy metals (such as copper and cadmium), ammonium, chlorine, chloramine, chemicals and medicine residue
- Accelerates cycling of new aquariums (usually no nitrite peak)
- Stimulates the growth of useful bacteria
- Counteracts the formation of algae
- Improves the performance of the biofilter
- Removes nasty odours



Fish

- Makes fish more lively, they eat more and get vibrant colours
- Reduces stress
- Makes fish recover more quickly and develop better physical resistance
- Prevents and cures bacterial infections (such as fin rot and infected wounds)
- Provides efficient protection for the mucous skin
- Wounds heal more quickly
- Neutralizes harmful bacteria
- Fish recover more quickly after medical treatment
- Stimulates breeding
- Fry grow twice as quickly
- Considerably reduces the quarantine time
- Ensures a considerably reduced loss of fish during long distance transport

Plants (freshwater) and corals (saltwater)

- Better growth and a more vibrant colour



EASY-LIFE FFM: TIPS FOR USE IN FRESHWATER AND MARINE AQUARIUMS

Maintenance of all types of aquaria

<i>First time usage</i>	Full dosage
<i>Monthly maintenance</i>	Full dosage
<i>Water change</i>	Full dosage for refill water

Small problems

<i>Slight stress, discomfort, fish becoming darker in colour, timid and nervous fish, slight contamination of the water</i>	Double dosage and, if necessary, repeat the treatment a day later
---	---



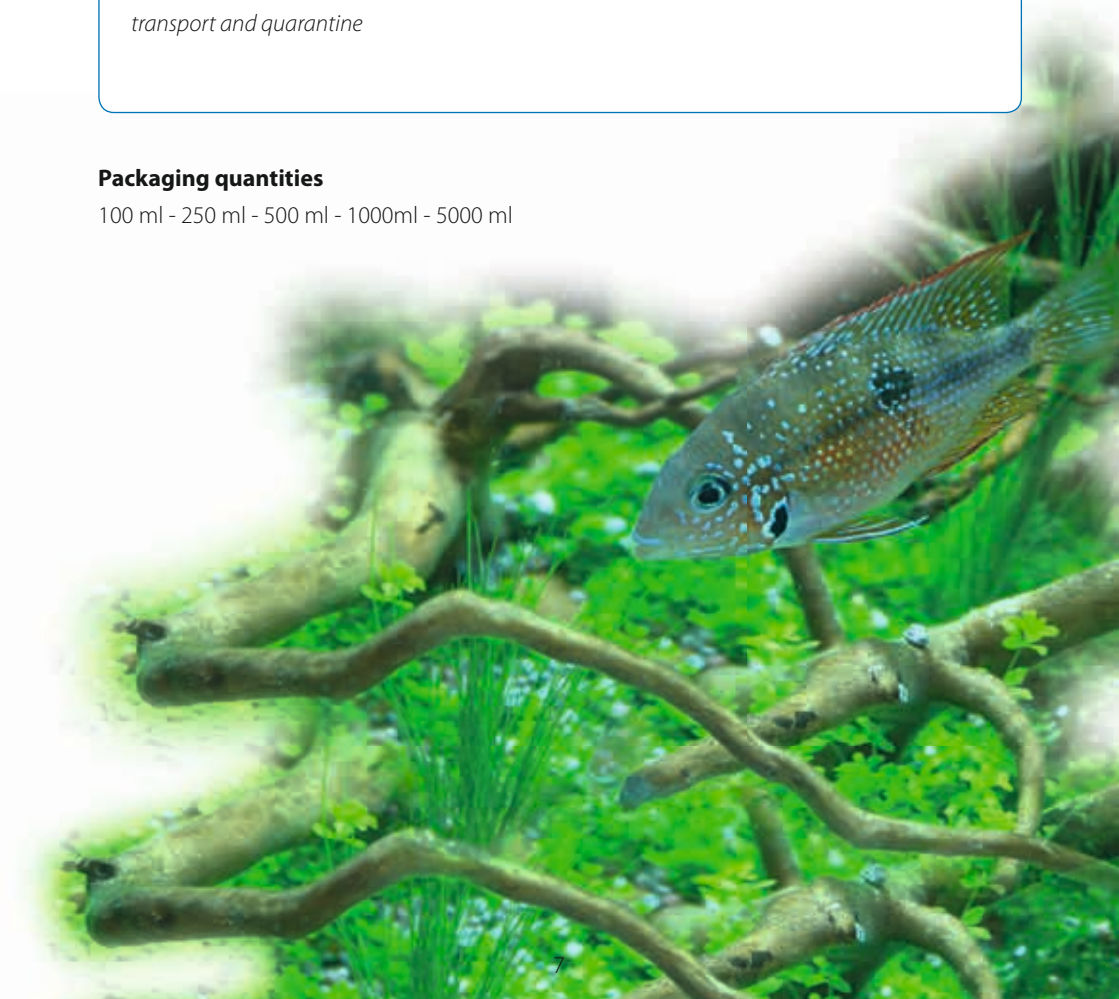
More serious problems, quarantine and transport

Serious stress, bacterial infections (fin rot, sticky fins, internal and/or external injuries), damage to the skin mucous, heavy contamination of the water, fungi, after medical treatment, during (long-distance) transport and quarantine

Triple dosage and, if necessary, repeat the treatment a day later

Packaging quantities

100 ml - 250 ml - 500 ml - 1000ml - 5000 ml



EasyStart

Making aquarium water suitable for fish

EasyStart is a filter starter. Its objective is to quickly purify and stabilize the water when cycling a new freshwater or marine aquarium, so that it is suitable for fish.

EasyStart is a unique combination of highly active bacteria cultures. The unique bacteria carrier ensures an accelerated increase in useful bacteria, so that, for example, the creation of poisonous nitrite can be avoided. It also helps to reduce the effects of harmful bacteria and rids the water of heavy metals and other chemical contamination. The result is a healthy aquarium with lively fish which have vibrant colours.



TIPS FOR USE

<i>On the first day</i>	Full dosage
<i>After a week</i>	Full dosage
<i>Continued usage</i>	The normal maintenance programme
<i>To prevent a nitrite peak. Measure nitrite with the Easy-Life 5in1 Test Strips.</i>	

Packaging quantities

100 ml - 250 ml - 500 ml - 1000 ml - 5000 ml



Catappa-X

Fluid Catappa leaves

Catappa leaves are added to aquarium water because of the healing effect they have on fish and shrimps. Catappa-X is the effective, fluid variant of the leaves.

The leaves of the Catappa tree release healing substances when they are immersed in water. The disadvantage of doing so is that, in time, they decompose, which results in the release of organic compounds. This has a number of unpleasant side effects: it turns the water brown and the released organic compounds contaminate the water.

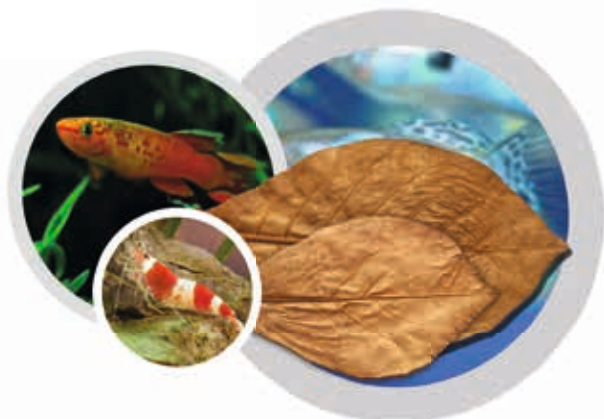
Catappa-X is the answer to these problems. It does not discolour nor contaminate the water and it lowers the bacterial count, which greatly reduces the chance of disease. Catappa-X allows fish and shrimps to flourish and have more vibrant colours.

Product benefits

- Fish and shrimps with more vibrant colours
- Improves the general health of the living creatures
- Prevents diseases
- Does not turn the water brown
- No extra organic contamination

Packaging quantities

100 ml - 250 ml - 500 ml - 1000 ml



AquaMaker

MAKES AGGRESIVE TAP WATER IMMEDIATELY SUITABLE

AquaMaker is a powerful, fast working water conditioner. It makes aggressive tap water immediately suitable for all freshwater and marine aquariums. AquaMaker can also be used in reef aquariums and garden ponds. It is absolutely safe for all fish, plants, corals, shrimps, snails and the biological filter.

AquaMaker is very versatile:

- Removes chlorine
- Removes chloramine
- Removes heavy metals like copper, zinc and lead
- Binds and detoxifies poisonous ammonia
- Binds and neutralizes toxic nitrite
- Binds and neutralizes nitrate
- Destresses fish
- Protects the mucous membrane and gills of fish

AquaMaker has no impact on the pH, KH or GH. Furthermore, AquaMaker will not overactivate skimmers.

Use

AquaMaker is best added to the tap water used for the water change. Only use the dose for the volume of this new tap water. Thus, aggressive substances are immediately neutralized.

AquaMaker can of course also be added directly to the aquarium. In this case, base the dosage on the total volume of the aquarium water.



Example: dosing to tap water for water change

Five buckets of each 10 liters are filled to change water. Dose 2 ml of AquaMaker in each bucket and mix it. The mixture can be added to the aquarium right away, because AquaMaker works instantly.

Example: dosing to an aquarium

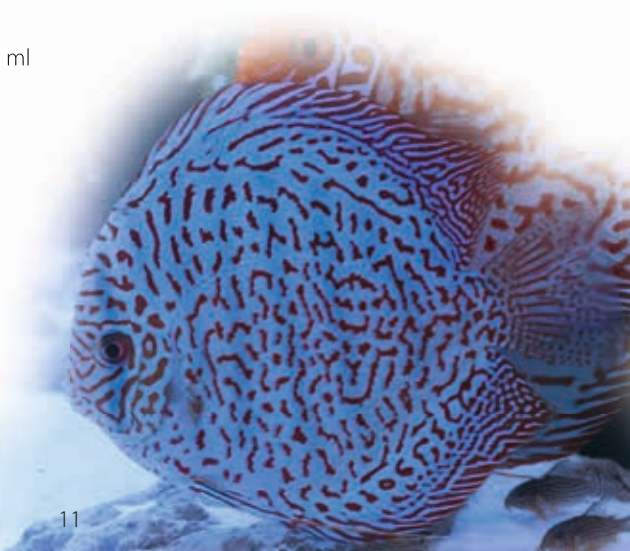
An aquarium has a water volume of 100 liters and 20 liters of water is changed. The dosage of AquaMaker is for the full water content, in this case 100 liters. The addition to the aquarium water should be 20 ml of AquaMaker.

Deviating dosages – concentrations of chloramine, chlorine and nitrite & water temperature higher as 30 °C. Shake before use. The product may release a sulfur odor.

<i>standard dosage (water change)</i>	10 ml per 50 liters
<i>low concentrations chlorine, chloramine or ammonia</i>	5 ml per 50 liters
<i>high concentrations chlorine, chloramine or ammonia</i>	20 ml per 50 liters
<i>very high nitrite concentrations (3 mg/l or higher)</i>	30 ml per 50 liters
<i>very high ammonia concentrations (1 mg/l or higher)</i>	30 ml per 50 liters
<i>water temperature above 30 °C (dosage: half te</i>	5 ml per 50 liters

Packaging quantities

100 ml - 250 ml - 500 ml - 1000 ml - 5000 ml



Catappa-Marine

Fluid Catappa leaves for reef aquariums

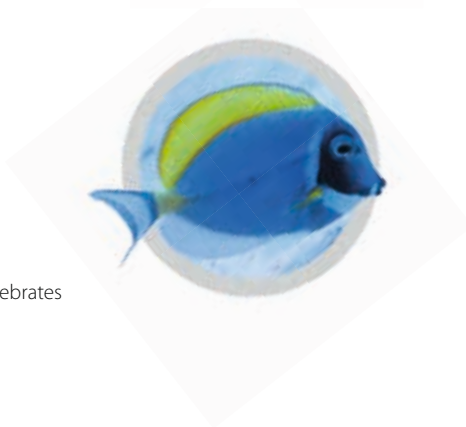
Leaves from the Catappa tree are known for their healing effect on fish: they lower germ density (less pathogens), prevent fungal infections, improve growth, prevent problems with the slime coat and stimulate the vitality and colouring.

Through a special procedure, ingredients from Catappa leaves are made suitable for marine aquariums. Catappa-Marine does not discolour nor contaminate the water, while the vitality and colouring of the fish visibly improves and greatly reduces the change of disease.



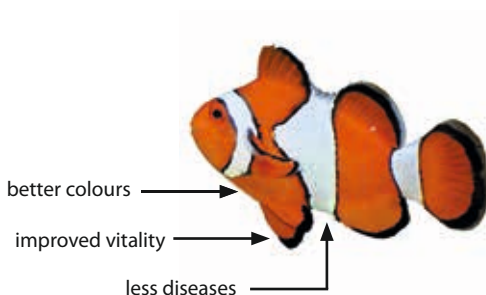
Product benefits of Catappa-Marine

- Fish and shrimps with more vibrant colours
- Improves the general health of the living creatures
- Prevents diseases
- Does not turn the water brown
- No extra organic contamination
- Completely reef safe
- Safe for soft corals, hard corals, shrimps, fish and other invertebrates
- Has no influence on any water parameters
- Has no influence on skimmers



Packaging quantities

250 ml - 500 ml - 1000 ml



ProFito

Universal plant food

Easy-Life ProFito is an all-in-one, universal plant food which is suitable for all water plants in aquaria. The composition of ProFito ensures strong, healthy and lush plant growth. Thanks to the optimal composition of the ingredients, plants have everything they need for unhindered, strong and lush growth.

Product benefits

- Highly concentrated, all-in-one, universal plant food
- All the necessary nutrients in a single product, such as iron, potassium and manganese
- Strong, healthy and lush plant growth
- Promotes the production of cytokinins, which stimulates the division of cells
- Produces wider leaves and intense colours
- Improves and consolidates the biological balance in the aquarium
- Contains no nitrates or phosphates
- Extremely economical to use

ProFito stimulates the division of cells

The high concentrations of, in particular, iron, potassium and magnesium in ProFito fulfil the plants' need to absorb large quantities of these nutrients.

This plant food contains many micronutrients (including manganese, boron, cobalt, lithium, molybdenum, copper, tin, nickel, fluorine, iodine, aluminium, zinc, selenium and vanadium).

These substances and a number of rare minerals that are added give plants exactly what they require for trouble-free growth. The plants are stimulated to create cytokinins (plant hormones), which stimulate the division of cells. The leaves grow to become much wider and the colours become extremely vibrant.



ProFito continuation →



Easy Life: First Place AGA AquaScaping Contest 2005.

Profito - continuation

Thanks to the optimal supply of nutrients provided by ProFito, water plants grow quickly and stronger. As a result, unwanted substances in the aquarium water, such as certain nitrogen and phosphate compounds, are absorbed by the plants more quickly. Nitrate, phosphate and ammonium are, therefore, removed from the aquarium water more quickly by the plants. ProFito relieves the burden placed on the water and a better biological balance is created in the aquarium.

ProFito does not contain nitrate or phosphate. The nutrients in ProFito are stabilized in a number of different ways by various chelators. Antioxidants and preservatives slow down the perishability of ProFito, which guarantees a longer shelf life. Storing the product in a cool and dark place also increases the shelf life.

Packaging quantities

100 ml - 250 ml - 500 ml - 2000 ml - 5000 ml



Ferro

Extra iron when needed

Easy-Life Ferro contains easily absorbable iron for water plants. Iron is essential for the good development of plant leaves. Iron ensures that the leaves are green thanks to the creation of chlorophyll.

A lack of iron results in the leaves turning yellow, which is known as chlorosis. Ferro helps to prevent this problem. If there are fast-growing plants in an aquarium, then there is a good chance of iron deficiency. In that case, it is recommended to add Ferro to prevent problems.

Packaging quantities

250 ml - 500 ml



Potassium

Extra potassium is often necessary

A shortage of potassium easily arises in areas with soft water. This demonstrates itself by white, decolourized leaves in the top of a plant. The leaves may also have black pinholes. These symptoms are often confused with the symptoms of a deficiency of iron. It is recommended to add both Easy-Life Ferro and Easy-Life Potassium to compensate for or prevent deficiencies, particularly in aquaria with fast-growing plants.

Packaging quantities

250 ml - 500 ml



EasyCarbo

Carbon is essential for good plant growth

EasyCarbo is an extremely powerful and effective carbon source for aquarium plants. It also actively combats and prevents the growth of algae.

Carbon (in the form of CO_2 dissolved in the water) is one of the most important nutrients for optimal plant growth. If there is a lack of carbon, plants are not able to optimally assimilate and grow. As a result of this deficiency, plants stop growing and no longer compete with algae for the nutrients. If this carbon deficiency lasts for too long, then plants start to leak sugars and other nutrients which attract algae. As a result, leaves become covered in algae and look unattractive.

EasyCarbo is the solution to this problem. After approximately two weeks of using EasyCarbo, plants visibly grow better and look better. This is particularly true of swamp plants (Cryptocoryne sp., Echinodorus sp., etcetera). As a result of the increased competition for nutrients, algae find it very difficult to survive and, in most cases, they disappear altogether.



The use of ProFito and EasyCarbo is the right combination.

Plants require more than just carbon. Trace elements are also essential. Since their presence cannot be precisely measured and we, therefore, do not know which trace elements are present in the water, ProFito is the ideal solution to enrich water with trace elements in the most complete way.

Packaging quantities

100 ml - 250 ml - 500 ml - 1000 ml - 5000 ml

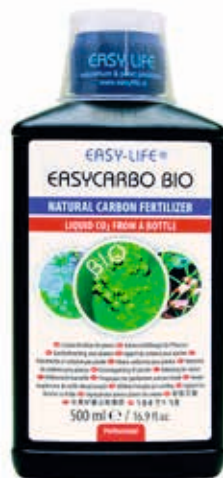


EasyCarbo-Bio

natural liquid carbon source

EasyCarbo Bio is a natural liquid carbon source for aquarium plants on a natural basis. Carbon is important for plants to grow well and compete effectively with algae. With too little carbon or CO₂ in the aquarium, algae often get a chance.

Carbon (in the form of CO₂ dissolved in the water) is one of the most important nutrients for optimal plant growth. If there is a lack of carbon, plants are not able to optimally assimilate and grow. As a result of this deficiency, plants stop growing and no longer compete with algae for the nutrients. If this carbon deficiency lasts for too long, then plants start to leak sugars and other nutrients which attract algae. As a result, leaves become covered in algae and look unattractive.



The use of ProFito and EasyCarbo Bio is the right combination

Plants require more than just carbon. Trace elements are also essential. Since their presence cannot be precisely measured and we, therefore, do not know which trace elements are present in the water, ProFito is the ideal solution to enrich water with trace elements in the most complete way.

Packaging quantities

100 ml - 250 ml - 500 ml
– 1000 ml - 5000 ml



Nitro & Fosfo

Essential macronutrients!

Easy-Life Nitro and Easy-Life Fosfo are used to compensate for a deficiency of nitrogen (N) and phosphorus (P), respectively. A deficiency of these macronutrients immediately leads to faltering growth or even to growth arrest.

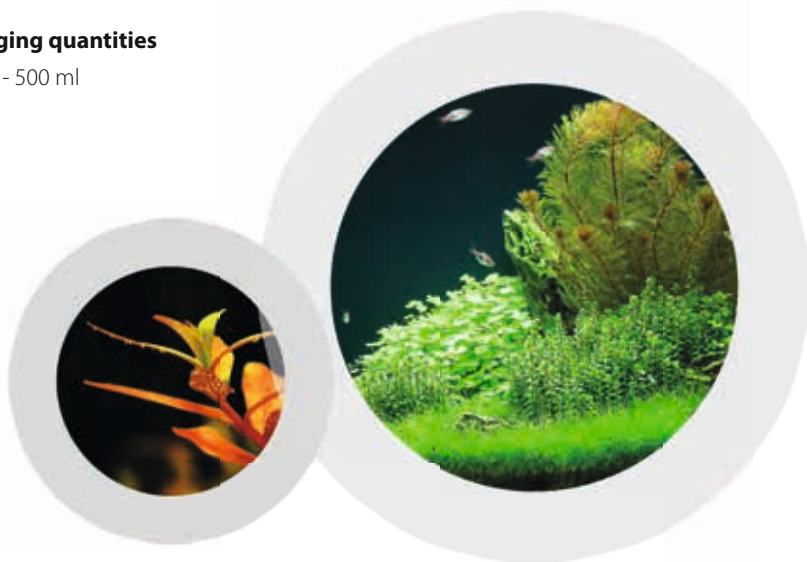


A shortage of N and P can quickly arise in plant aquaria that contain very few fish or no fish at all, because very little or no fish feed is used. Together with fish excrement, fish feed is the most important source of N and P. A deficiency can also arise in aquaria with a very high density of plants. Nitro (which contains nitrate NO_3) and Fosfo (which contains phosphate PO_4) immediately compensate for these deficiencies.

The Redfield ratio is usually used to decide on the correct ratio between nitrate (NO_3) and phosphate (PO_4). See further on for a detailed explanation.

Packaging quantities

250 ml - 500 ml



25 Root Sticks

Optimal root feeding

The Easy-Life 25 Root Sticks are ideal to feed plants directly at the roots.

The product contains 25 pieces of special clay sticks that are very nutritious and have a high iron content. Due to the special pre-treatment of these sticks, they do not fall apart immediately upon contact with water. The release of nutrients goes very gradually over a period of several weeks. The water will not get cloudy at all, so algae cannot take advantage of that. The product is very easy to use and causes no additional water pollution.



Use these root sticks for plants with a strong need for root nutrition such as Cryptocoryne, Echinodorus or Lotus. If the soil layer is very narrow or the plant roots are small, the sticks can be very easily broken into smaller pieces. The root sticks can therefore be used in all cases.

Packaging quantities

25 pcs. per jar.





The Golden Triangle in your aquarium

Optimal use of nutrients

The theory of plant growth in an aquarium

Light



Macronutrients
(CO₂, NO₃, PO₄, K, etc.)

Micronutrients
(Fe, Mn, Sn, etc.)

An attractive plant aquarium is growing in popularity. Good general knowledge is required in order to have an attractive looking aquarium. Read this page carefully. It gives you insight into the interesting topic of "Plant growth in an aquarium".

The Golden Triangle for plants is light,

macronutrients and micronutrients.

It is for good reason that light is at the top, because the need for and the absorption speed of nutrients is determined by light. It may be obvious that plants want to grow more quickly if there is a lot of light and that they, therefore, require more nutrients than plants in moderately lit aquaria. Of course, the need for nutrients also depends on the types

of plant in an aquarium. Fast-growing water plants (true water plants), such as Vallisneria, absorb much more nitrate and phosphate than slow-growing swamp plants, such as Anubias.

All nutrients are important

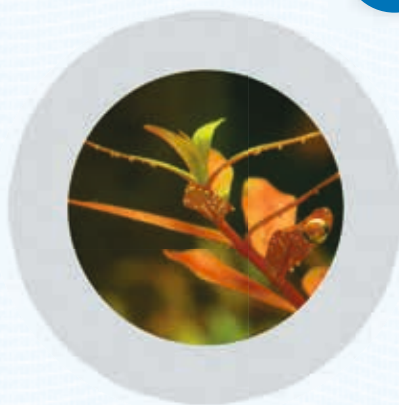
Plants require a lot of nutrients. Healthy growth, without algae, is only possible if all the conditions are met, such as light, CO_2 , N, P, K, etc. If one or more of these elements is missing, then the growth will falter or stop altogether.

Algae and leaking sugars

If growth falters, then processes are not completed and plants will start to leak sugars. The sugars activate algae spores and algae start to grow, since algae are much less sensitive to a deficiency in nutrients. That is why it is desirable to ensure that all the elements from the Golden Triangle are available in order to prevent (algae) problems. It is crucial to find the correct balance.

Redfield-ratio: NO_3 versus PO_4

New insight has taught us that it is not the presence of nitrate and phosphate that cause algae growth. It is rather a deficiency of these macronutrients that leads to algae growth, because the plants will start to leak sugars. On the other hand, a phosphate concentration which is too high (greater than 2.0 mg/l) also leads to algae problems. A concentration of



0.5 - 2.0 mg/l PO_4 is usually acceptable.

Normally, plants receive N and P from fish feed and fish excrements. A deficiency of these macronutrients may arise if there are not many fish in the aquarium, if the fish are not fed very often or if there are too many plants and too much light.

Many people control the level of NO_3 - PO_4 by means of the Redfield ratio (Google it) in order to compensate for a deficiency. The Redfield ratio is the ratio between C-N-P in the ratio of 105 : 16 : 1. In practice, the ratio between N and P (N : P = 16 : 1) is used and that is roughly translated into nitrate and phosphate water values.

By adding extra nitrate (Easy-Life Nitro) and phosphate (Easy-Life Fosfo), the correct ratio can be achieved and a deficiency can be avoided.



Carbon/CO₂

A carbon deficiency (usually in the form of CO₂) also leads to algae and poor plant growth. The assimilation process is stunted and sugars and other substances which stimulate algae are released. For that reason, it is important to ensure there is sufficient carbon. A well lit aquarium with fast-growing plants requires a lot of carbon. CO₂ from a gas cylinder or as a liquid (EasyCarbo) is then needed to rectify or prevent problems.

Light determines the need for nutrients

Light is the driving force in the assimilation process and determines the need for nutrients and how quickly they are absorbed. The amount of light, in particular, is important in determining the absorption speed. If there

is a lot of light, plants want to absorb more nutrients and they also want to absorb them more quickly. If there is a lot of light, nutrients may be supplied too slowly and the internal buffers will run empty. At this crucial moment, plants increasingly take nutrients from the water and the demand for nutrients increases greatly.



In order to translate the influence of light on the demand for nutrients into practical terms, we will describe the situation for two types of aquarium.

Type I, normal, most common aquarium

This type of aquarium has an average amount of light and normal plant growth, with only a few fast-growing plants.

We use the following water values for this type of aquarium:

CO_2	15 - 20 mg/l
NO_3	5 - 10 mg/l, measure once a week and, if necessary, replete with Easy-Life Nitro
PO_4	0.5 -1.0 mg/l, measure once a week and, if necessary, replete with Easy-Life Fosfo

Add

Every day A half to a full dose of ProFito (full dose = 1/7 of the weekly dose)

Every day A full dose of EasyCarbo

Type II, professional aquarium

This is a real plant aquarium with T5 lighting and a lot of fast-growing, demanding plants.

We use the following water values for this type of aquarium:

CO_2	20 - 30 mg/l
NO_3	15 - 20 mg/l, measure once a week and, if necessary, replete with Easy-Life Nitro
PO_4	1.0 -1.5 mg/l, measure once a week and, if necessary, replete with Easy-Life Fosfo

Add

Every day A full to a double dose of ProFito (full dose = 1/7 of the weekly dose)

Every day A full dose of EasyCarbo

Every week Ferro for extra iron

The difference between a type I aquarium and a type II aquarium is mainly the amount of light. The amount of light determines the absorption speed and means that more nutrients must be available more quickly "locally on the surface of the leaves". It is understandable that if there are many fast-growing plants, then the need for nutrients is much greater (locally). That is why we recommend higher values for a type II aquarium. Decreasing values (but not all the way to zero!) are acceptable as long as they are repleted in time.



Extra example:

Aquarium 60x60x60 cm

Weekly addition of ProFito, Ferro, Potassium, Nitro and Fosfo. EasyCarbo is added daily.

Every month Easy-Life Fluid Filter Medium after a 50% water change.



Type I aquarium for the everyday enthusiast

Most aquaria are a type I aquarium (120 x 60 x 60 cm), which have standard lighting using TLD tubes (3 x 36 Watt 860). The gravel (without a nutrient substrate) has very few plants and most of the plants are not very demanding, such as ferns and Cryptocorynes. The lighting is usually rather limited. That is why the nutrient level for this type of aquarium can be kept quite low.

Adding nutrients according to a standard schedule

<i>Sundays</i>	Normal dose of ProFitto
<i>Daily (except Friday)</i>	Half dose of EasyCarbo
<i>Friday maintenance</i>	Water change 20%, add Nitro and Fosfo
<i>Friday after maintenance</i>	A quarter dose of Easy-Life Fluid Filter Medium

MEASURED WATER VALUES

NO_3	10 mg/l	PO_4	0.5 mg/l
KH	5	pH	6.8
CO_2	ca 23 mg/l (via gas cylinder)	GH	7



Type II aquarium for the avid enthusiast

This type of aquarium is full of demanding plants. They grow and assimilate quickly and require a lot of nutrients. It is a strongly lit aquarium (120 x 60 x 60 cm) with 6 T5 tubes (6 x 65 Watt 860). The intention is clearly to have the gravel (without a nutrient substrate) full of demanding plants, such as *Hemianthus Callitrichoides* and *Echinodorus tenellus*. Stem plants will be growing in the back-ground (e.g. *Ludwigia* sp.). They require a lot of light and nutrients in order to be of the best possible colour.

Adding nutrients according to an intense schedule

<i>Sunday</i>	Full dose of ProFito
<i>Wednesday</i>	Half dose of ProFito plus a full dose of Easy-Life Ferro
<i>Daily (except Friday)</i>	Full dose of EasyCarbo
<i>Friday maintenance</i>	Water change 30%, add Easy-Life Nitro and Easy-Life Fosfo
<i>Friday after maintenance</i>	A quarter dose of Easy-Life Fluid Filter Medium

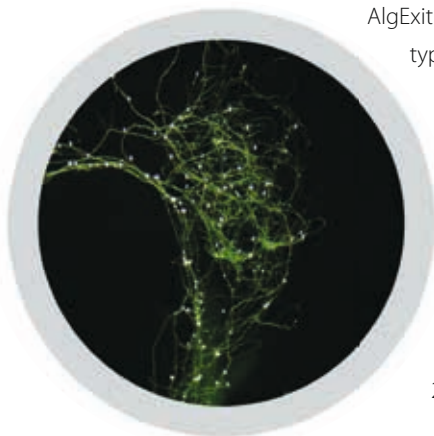
MEASURED WATER VALUES

NO_3	16 mg/l	PO_4	1.5 mg/l
KH	5	pH	6.7
CO_2	ca 28 mg/l (via gas cylinder)	GH	7

AlgExit

Clean water without algae

Algae are produced when an aquarium is not well balanced. Causes of an unbalanced aquarium are the excessive feeding of fish, too many fish in an aquarium, excessive lighting or excessive fertilization. You also take them home when you purchase fish or plants!



AlgExit is a safe and effective product for combating almost all types of algae in a freshwater aquarium. Algae, such as beard algae, brush algae and filamentous algae, are effectively wiped out. AlgExit is easy and economical to use and harmless to fish, shrimps, molluscs and plants. The algae growth is first brought to a standstill and then it disappears. Any algae spores that are still present in the water are removed.

Packaging quantities

250 ml - 500 ml - 1000 ml

Blue Exit

Clean water without blue-green algae (cyanobacteria)

Blue Exit is the new way of getting rid of blue-green algae (cyanobacteria) without using antibiotics or compounds which contain copper.

Cyanobacteria (blue-green algae, slime algae or smear algae) often arise as a result of fertilization, an imbalanced bacteria situation, seriously contaminated bottom material (rotting) or too low nitrate levels.





Blue Exit effectively gets rid of cyanobacteria. Blue Exit is easy and safe to use and is harmless to fish, shrimps, molluscs and plants. If there is a serious infestation, the Blue Exit treatment can be prolonged for a few days, even with a double dose.

Packaging quantities

250 ml - 500 ml - 1000 ml



Excital

Clean water without red slime algae (cyanobacteria)

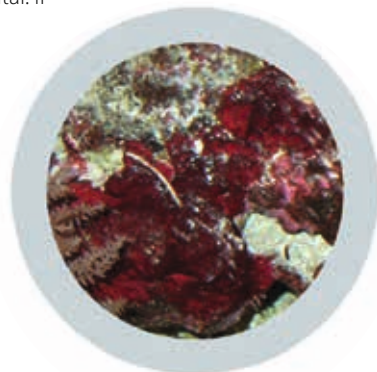
Excital is the new way of removing cyanobacteria without using antibiotics or compounds which contain copper.



Cyanobacteria (red slime algae) often arise if the water temperature rises, sometimes in combination with a high level of organics in the water or rotting bottom material. Excital effectively gets rid of cyanobacteria. Excital is easy and safe to use and is harmless to fish and corals. If there is a serious infestation, then it is recommended to first remove the cyanobacteria by hand as much as possible and then add Excital. If there is a serious infestation, the Excital treatment can be prolonged for a few days, even with a double dose.

Packaging quantities

250 ml - 500 ml - 1000 ml



Bio-Exit Green

New Balance

A biological imbalance can cause plants to grow poorly and leak sugars. These sugars can serve as food sources for unsightly algae (such as beard algae, filamentous algae, brush algae and brown algae). Bio-Exit Green restores this biological balance by countering the leakage of sugars in plants by offering a unique mix of specific organic acids and growth stimulators.

When used correctly, it is not harmful to fish, plants, shrimps and other invertebrates.

Packaging quantities

250 ml - 500 ml – 1000 ml



Bio-Exit Blue

New Micro Balance

Clean soil without blue-green algae (cyanobacteria)

A microbiological imbalance of soil bacteria can ensure that blue algae or cyanobacteria have the opportunity to grow. Bio-Exit Blue strongly stimulates the growth of heterotrophic soil bacteria. In this way the microbiological balance in the soil can be completely restored.

When used correctly, it is not harmful to fish, plants, shrimps and other invertebrates.

Packaging quantities

250 ml - 500 ml – 1000 ml



EasyNeo - Safe Transport

Keep fish safe & healthy

Catching and transporting may damage or stress fish. This weakens the mucous membrane which is the primary protection of fish against diseases because it contains many antibodies.

This makes fish more sensitive to:

- **Spot diseases like Ichthyophthirius sp. in freshwater or Cryptocaryon irritans in saltwater**
- **Bacterial infections**
- **Fungal diseases**

After transport, the aquarium can be treated with EASYNEO® 100 ml for perfect aftercare to avoid diseases during the habituation period.

By adding EASYNEO® the immune system is significantly strengthened in a natural way. This effectively prevents illnesses and even mortality caused by stress and damage during transport.

100% safe & 100% natural

EASYNEO® contains no antibiotics, chemicals or heavy metals and is suitable for all fresh- and saltwater animals. It is harmless to fish, young fry, shrimp, snails, turtles and corals.

Packaging quantities

100 ml





Voogle

Prevent fish diseases without any antibiotics

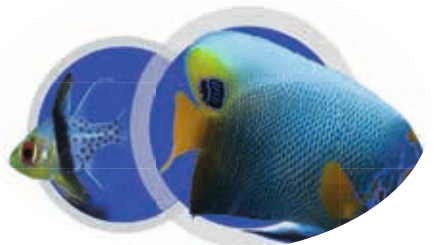
Voogle is an innovative product that helps to keep fish healthy and improves their immune system. Using Voogle will limit the use of antibiotics to a minimum. The natural immune system is stimulated, so that fish are better protected against diseases.



Every fish has a natural immune system against pathogens. Transportation, dirty water or a high number of pathogens in the water cause a lot of stress. Stress costs a great deal of energy and has a negative effect on the immune system. The mucous skin, gills and fins, in particular, become more sensitive to diseases, such as white spot, fungi and other types of infection. Weekly use of Voogle ensures that fish remain optimally protected in a natural way and the dangers resulting from pathogens are greatly reduced.



- Voogle has no harmful effect on fish, shrimps, lobsters, molluscs, plants or the biofilter.
- Voogle has no effect on the important water parameters and does not cause resistance.
- Voogle mostly consists of plant extracts and supporting vitamins and minerals.
- Voogle breaks down naturally, so that it is not necessary to change the water after using the product.



Resistance to antibiotics

The use of antibiotics with animals is becoming increasingly problematic. The number of resistant pathogens is increasing rapidly and this is becoming a serious problem for public health. It is also becoming an increasing problem in aquaristics. For example, there has been an alarming increase in resistant stems of *Ichthyophthirius Multifiliis* (white spot disease).

Voogle: the safe alternative that contains no antibiotics

Voogle can be used to prevent fish from becoming ill and, consequently, to avoid the use of antibiotics. Even if fish are already ill, Voogle is able to help the fish combat pathogens.

Use Voogle in freshwater and marine aquaria

<i>Aquarists</i>	Full dose once a week to prevent disease. When noticing the (initial) symptoms of disease: a five-day course of treatment.* When purchasing fish: a double dose to prevent infection.
<i>Transport</i>	Double dose during (long-distance) transport.
<i>Quarantine</i>	Five-day course of treatment to combat any possible symptoms of disease.*

* Voogle is extremely safe to use and multiple doses can be added in one go if the situation requires. The course of treatment can also be extended without any problems.

Packaging quantities

100 ml - 250 ml - 500 ml - 1000 ml - 5000 ml



Voogle: the new way

How does Voogle work?

Voogle is becoming increasingly familiar and use of it is on the rise. Not just on the part of consumers, but also by aquarium shops and importers of freshwater and saltwater fish.

Strong and weak fish

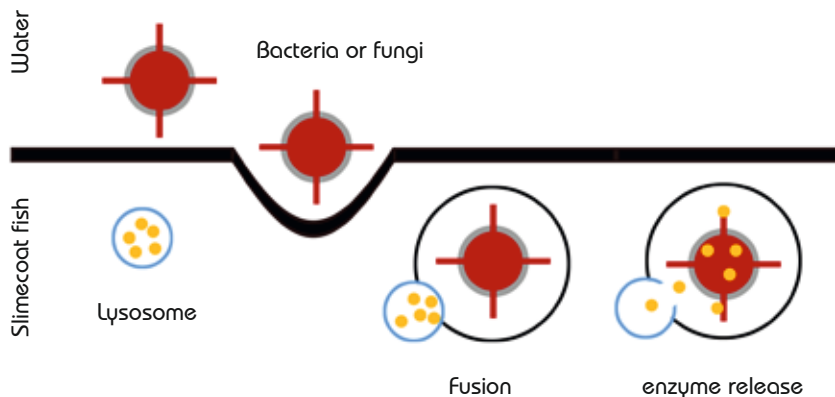


It is sometimes evident that in an aquarium containing diseased fish not all of the fish fall sick. A strange phenomenon, but one that also occurs in people: not everyone catches the flu or falls sick. If the immune system is in good order, then the chances of becoming ill are much lower as well, or you will recover more swiftly.

“Voogle owes a lot to this principle, working directly on the immune system of a fish.”

Each and every fish has a natural immune system that protects it from pathogens. Circumstances and factors such as transport, polluted/contaminated water or a high pathogen content will cause considerable stress. Stress increases levels of the hormone cortisol, which has a huge influence on metabolic processes. Disrupted osmotic regulation, vitamin C degradation, protein degradation, etc. expend a great deal of energy and exhaust the fish. However, the biggest problem is that cortisol has an immediate adverse effect on the immune system of a fish. The so-called leukocytes contain the enzymes ‘lysosomes’.

DIAGRAM: lysosomes fuse with a bacterium and release enzymes that digest the bacterium.



These lysosomes are surrounded by a membrane. These small “suicide sacs” normally fuse with harmful bacteria, fungi and viruses and leave the digestive enzymes to do their thing. Cortisol, however, changes the chemical structure of the membranes, thereby inhibiting the lysosomes from fusing properly with the pathogens. The mucous membranes in particular contain a lot of lysosomes and it is therefore clear that the natural protection at high cortisol levels (read: high stress levels) no longer functions properly.

Voogde sees to it that (for example) the production of cortisol is impeded, ensuring that the immune system is no longer hampered by loss of energy and active lysosomes. The upshot of this is that pathogens can once again be fought adequately due to the immune system being back up to full strength. The mucous membranes in particular will be able to provide optimum protection once more.

MaxiCoral A & B

Fascinating coral

Healthy, colourful coral in a marine aquarium is extremely attractive to look at. MaxiCoral A & B are essential products to help achieve healthy, colourful corals.

MaxiCoral A & B form an ideal professional mix with more than 40 trace elements, which enrich the saltwater. MaxiCoral A & B have been developed after careful analysis of saltwater samples from various (tropical) regions at varying depths. An average ideal mix was taken from these analyses, taking into consideration the demonstrable use of the various elements. This has been translated into more than 40 elements which have been combined together in MaxiCoral A & B.

MaxiCoral A & B must be used together to prevent a deficiency in essential minerals.

MaxiCoral A contains, amongst other things, a strontium/barium complex, Mg, Mn, Fe, Mo, Li, Rb, Cr, Co, Cu, Zn, Ni and Se.

MaxiCoral B contains, amongst other things, a fluorine/iodine mix, bromine, potassium and boron.

Packaging quantities

250 ml - 500 ml



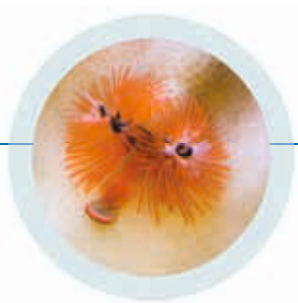
Calcium Supplement

Calcium is essential for the growth of coral.

The optimum calcium concentration in a marine aquarium is 410 - 450 mg per litre (ppm). Easy-Life Calcium is a powerful, concentrated product which compensates for a deficiency.

Packaging quantities

250 ml - 500 ml



Iodine

Iodine supplement

Iodine protects coral against UV radiation and forms a natural protection against all sorts of parasites.

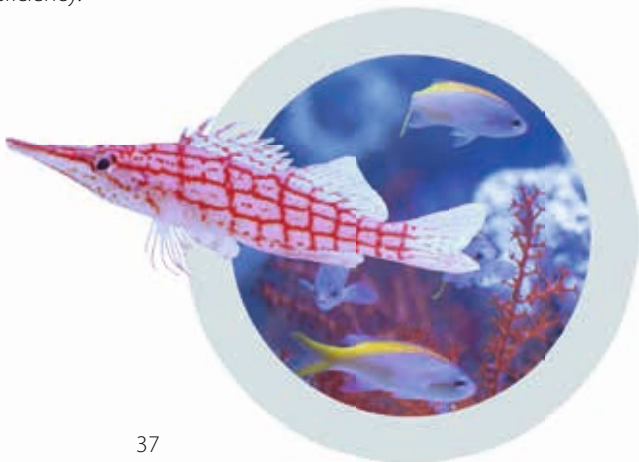
The optimal concentration of iodine (which is a combination of iodine, iodide and iodate) is 0.06 mg per litre (ppm) in a marine aquarium.

Easy-Life Iodine contains iodide and iodate in the most optimal ratio and is ideal for compensating for a deficiency.



Packaging quantities

250 ml - 500 ml



Magnesium Supplement



Magnesium is essential for the growth of healthy, attractive corals.

The optimal magnesium concentration in a marine aquarium is 1,250 – 1,400 mg per litre (ppm). Easy-Life Magnesium is a concentrated product which is ideal to use to compensate for a deficiency.

Packaging quantities

250 ml - 500 ml



Strontium Supplement

Strontium is an important element for the growth of corals.

The optimum strontium concentration in a marine aquarium is 8 - 12 mg per litre (ppm). Easy-Life Strontium is a concentrated product which is ideal to use to compensate for a deficiency.

Packaging quantities

250 ml - 500 ml



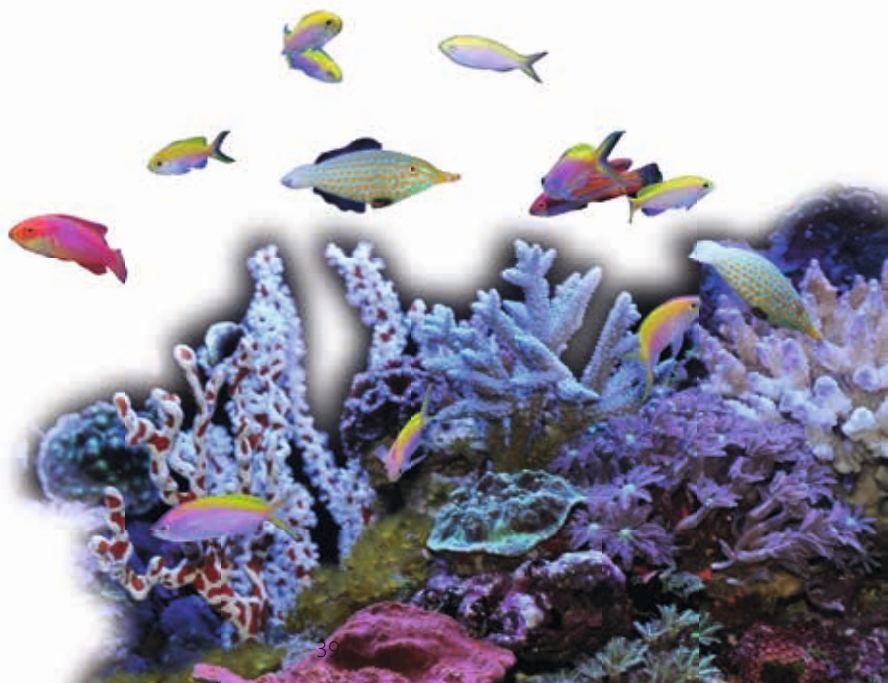
pH-Buffer (KH⁺)

In time, a marine aquarium will lose its carbonate hardness (KH), which may lead to a dangerous acidity level (pH value).

Easy-Life pH-Buffer (KH⁺) safely increases the KH, so that the pH value is stabilized at the correct level. The product contains in total 18,100 dKH.

Packaging quantities

500 ml



6in1 Test Strips

The numbers tell the tale

In order to achieve an optimal situation in an aquarium, it is extremely important to regularly test the water quality. The Easy-Life 6in1 Test Strips are quick to use and extremely accurate.

The Easy-Life 6in1 Test Strips give you the results to five important water parameters within 60 seconds.

The following six important water parameters are measured:

Acidity level	pH
Carbonate hardness	KH
Total hardness	GH
Total chlorine	TC
Nitrite concentration	NO ₂
Nitrate concentration	NO ₃



Potassium (K) water test

World's
First

Potassium: at least as important as iron!

Potassium is a macronutrient and at least as important as iron for a good and healthy plant growth. Therefore it is important to check the level of potassium to prevent too low levels and keep them in a healthy range (10-15 mg/l).

The Easy-Life Potassium test is a color test with a color chart.



Optimum level

Aquarium plants benefit from 10 -15 mg/l (=ppm) of potassium. A level below 5 mg/l (=ppm) is not desirable and can lead to growth problems, yellowing of the leafs and deformations. Often lack of potassium is confused with lack of iron, also because potassium was very difficult to measure until now. If the level is too low, extra potassium will help the plants to recover soon and they will color deep green.

Easy-Life Potassium (K) testkit

- User-friendly and reliable
- Color test with color test with easy-to-read color chart
- Measuring range from 0 to 25 mg/l (ppm) Potassium
- 1 testkit accounts for 50 tests



Phosphate (PO₄) water test

Very sensitive and easy to perform

The very sensitive and accurate Easy-Life Phosphate testkit is suitable for fresh water and marine aquariums. There are two different ranges within the testkit. A low range from 0.00 - 0.10 mg/l (ppm) and high range from 0 - 2.5 mg/l (ppm). The Easy-Life Phosphate water test only needs 1 reagents!

Easy-Life Phosphate (PO₄) test

- suitable for fresh water and marine aquariums
- easy to use, reliable and ultra sensitive
- colortest, easy to compare with a color chart
- PO₄ detectable from 0.01 mg/l (=ppm)
- low range: 0.00 – 0.02 – 0.04 – 0.06 – 0.08 – 0.10 mg/l (=ppm)
- high range: 0.0 – 0.5 – 1.0 – 1.5 – 2.0 – 2.5 mg/l (=ppm)
- testkit accounts for 75 tests



About us

Since 1998, Easy Life International B.V. has produced aquarium and pond products under the brand name Easy-Life. We distinguish ourselves in the market by the fact that our university-educated specialists have years of experience in keeping aquariums and, as a result, combine their practical experience and knowledge to produce innovative products. Thanks to the excellent reputation of Easy-Life and the excellent effects of its products, the products are now available in more than 50 countries, mostly due to word-of-mouth advertising. The products are now no longer only used by hobbyists, but also by retail traders, wholesalers, zoos and importers and exporters of fish and corals.

Easy Life International BV

Spoorallee 18

NL 6921HZ Duiven Netherlands

Telephone +31 (0)316 - 295000

Fax +31 (0)316 - 295011

Business hours Monday to Friday,
09.00am - 17.00pm.

Consumer inquires

For specific questions about our products, please contact the Easy-Life Team via the following e-mail address:
support@easylife.nl

Trade inquires

Trade inquires can be sent to us via the following e-mail address:
info@easylife.nl

Youtube clips

www.youtube.com/user/easylifeproducts

Awards

2004

Easy-Life Fluid Filter

Medium

"Aquarium Product of the
Year - Germany"



2008

ProFito professional plant
food

"Aquarium Product of the
Year - Germany"



© 2021 Easy Life Int. BV

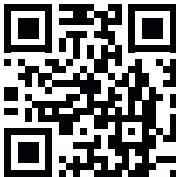
® EASY-LIFE • Trademark EU USA

EASY-LIFE®

PROFESSIONAL AQUARIUM & POND PRODUCTS

www.easylife.eu | www.easylife.nl

Easy-Life Dosing App



Type dos.easylife.eu in
your browser or SCAN
the above QR-CODE.



Your Specialist



Professional